



Structural Heart Disease
Unusual Cases

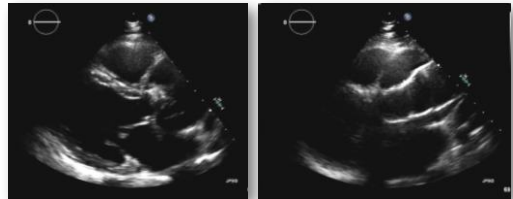
Heidi M. Connolly

One More Quick Case

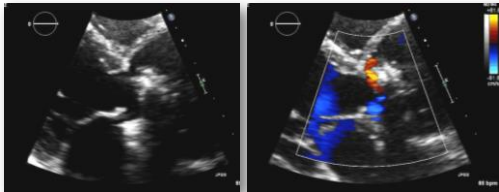
59-Year Old Man
Prior Composite Graft Replacement for Aneurysm

- 2004 - composite graft for 7 cm ascending aorta with severe AR, CA reimplemented
 - Pathology – “cystic medial necrosis” and loss of elastic fibers with deposition of mucoid material on elastin stain
 - Tricuspid aortic valve
 - Pre-operative cor angiogram – no CAD
- 2016 – routine TTE large RCA pseudoaneurysm. The RCA dehiscd from graft, large retrosternal hematoma

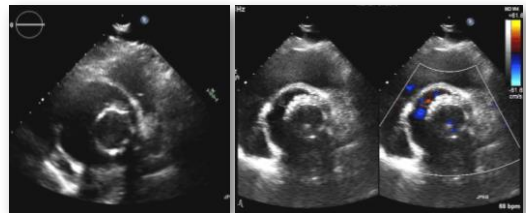
59-Year Old Man
Prior Composite Graft Replacement for Aneurysm



59-Year Old Man
Prior Composite Graft Replacement for Aneurysm



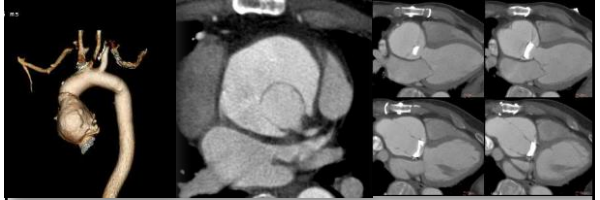
59-Year Old Man
Prior Composite Graft Replacement for Aneurysm



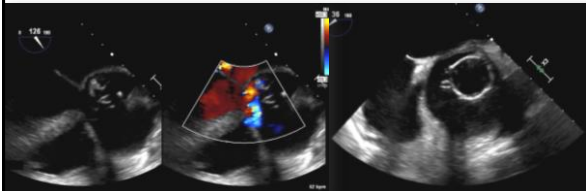
What next?

1. TEE
2. CTA
3. Call a surgeon

59-Year Old Man Prior Composite Graft Replacement for Aneurysm



59-Year Old Man Prior Composite Graft Replacement for Aneurysm



59-Year Old Man Prior Composite Graft Replacement for Aneurysm

- Urgent surgical intervention
 - Debridement of previous aortic root replacement
 - Redo aortic root replacement with a 27/29 On-X composite valve conduit, reimplantation of LCA button
 - Reimplantation of re-mobilized RCA
- 1 of 4 operative tissue cultures – Cutibacterium acnes broth
- Subsequent genetic testing negative

Questions & Discussion
connolly.heidi@mayo.edu