



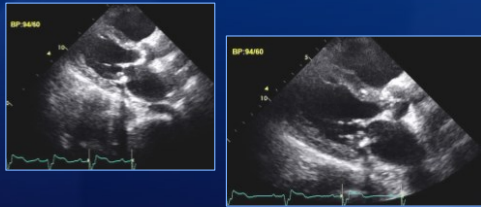
84 Year Old Woman with AS and Low LV Ejection Fraction *Case Presentation*

Fletcher A. Miller, Jr, MD
Mayo Clinic Rochester

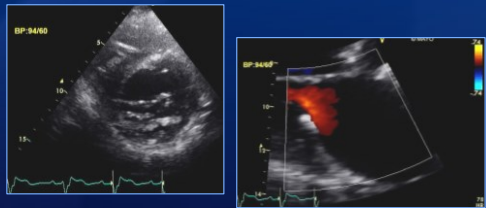
84 Year Old Woman with CAD and Aortic Stenosis

- Underwent CABG surgery 11 years ago
- Non-ST-elevation myocardial infarction one year ago
- Known aortic stenosis
- Can walk slowly; limited by dyspnea and fatigue
- Recent hemoglobin 8.1; received transfusions

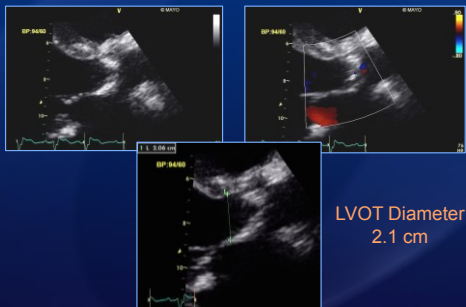
84 Year Old Woman with CAD and Aortic Stenosis



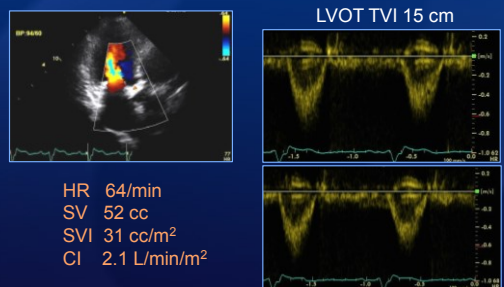
84 Year Old Woman with CAD and Aortic Stenosis



84 Year Old Woman with CAD and Aortic Stenosis

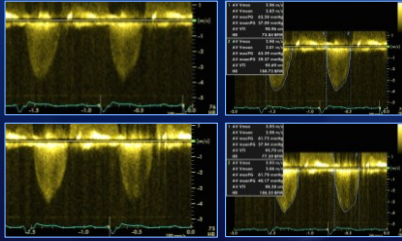


84 Year Old Woman with CAD and Aortic Stenosis

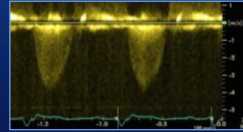


84 Year Old Woman with CAD and Aortic Stenosis

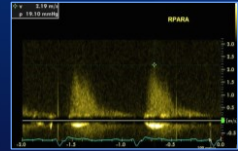
AV MG 39 mmHg
 AV TVI 97cm
 SV 52cc
 AVA 0.54 cm²



84 Year Old Woman with CAD and Aortic Stenosis
 Aortic Valve CW Doppler



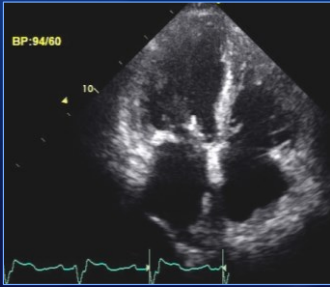
Apex



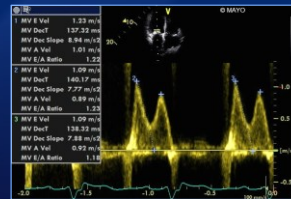
Right Parasternal



84 Year Old Woman with CAD and Aortic Stenosis



84 Year Old Woman with CAD and Aortic Stenosis
 Mitral Valve PW Doppler

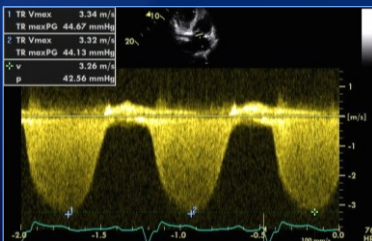


E = 1.1 m/sec
 A = 0.9 m/sec
 E at A = 0.3 m/sec
 Corrected A = 0.6 m/sec
 E/A = 1.8
 DT = 138 msec

Grade 3-4/4 Diastolic Dysfunction



84 Year Old Woman with CAD and Aortic Stenosis
 Tricuspid Valve CW Doppler

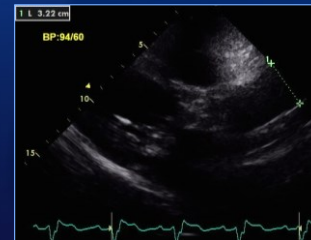


TR velocity
 3.3 m/sec
 RVSP
 58 mmHg



84 Year Old Woman with CAD and Aortic Stenosis

Normal Caliber Ascending Aorta



84 Year Old Woman with CAD and Aortic Stenosis

Echo Report

- Severe calcific aortic stenosis with mild regurgitation
- AVA 0.54 cm²; MG 39 mmHg
- Moderately calcified mitral annulus with thickened leaflets, mild stenosis and mild to moderate regurgitation
- Borderline LV enlargement with EF 19%
- LV SVI 31 cc/m²; CI 2.1 L/min.m²
- Grade 3-4/4 LV diastolic dysfunction
- RVSP 58 mmHg (BP 96/60 mmHg)



84 Year Old Woman with CAD and Aortic Stenosis

- Because of comorbidities, including dementia, it was decided not to proceed with aortic valve replacement
- She received palliative care



Mayo Clinic Locations

