

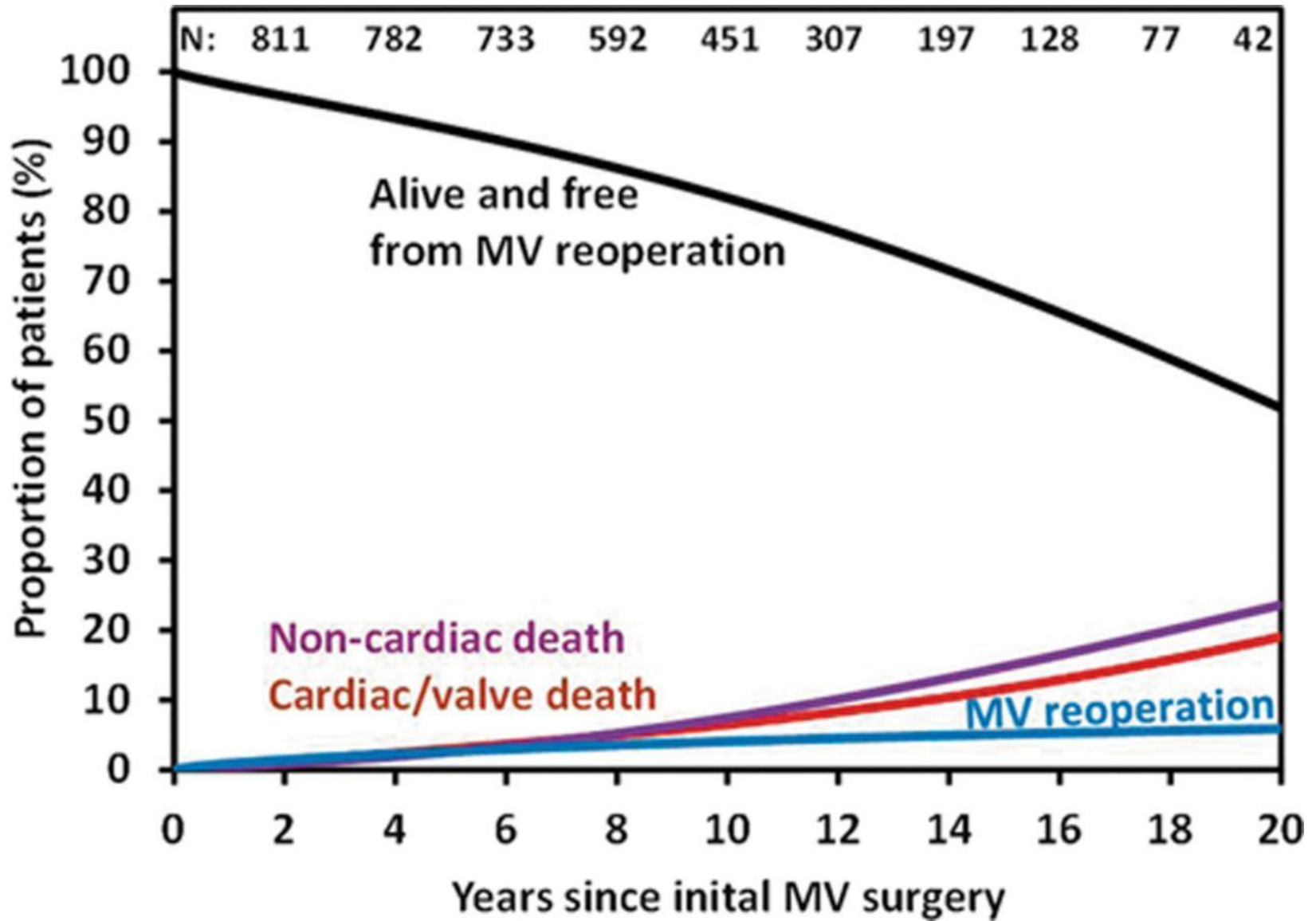
Cardiac Failure

Intervention

Advanced Echo 2015

Jim.Newton@ouh.nhs.uk

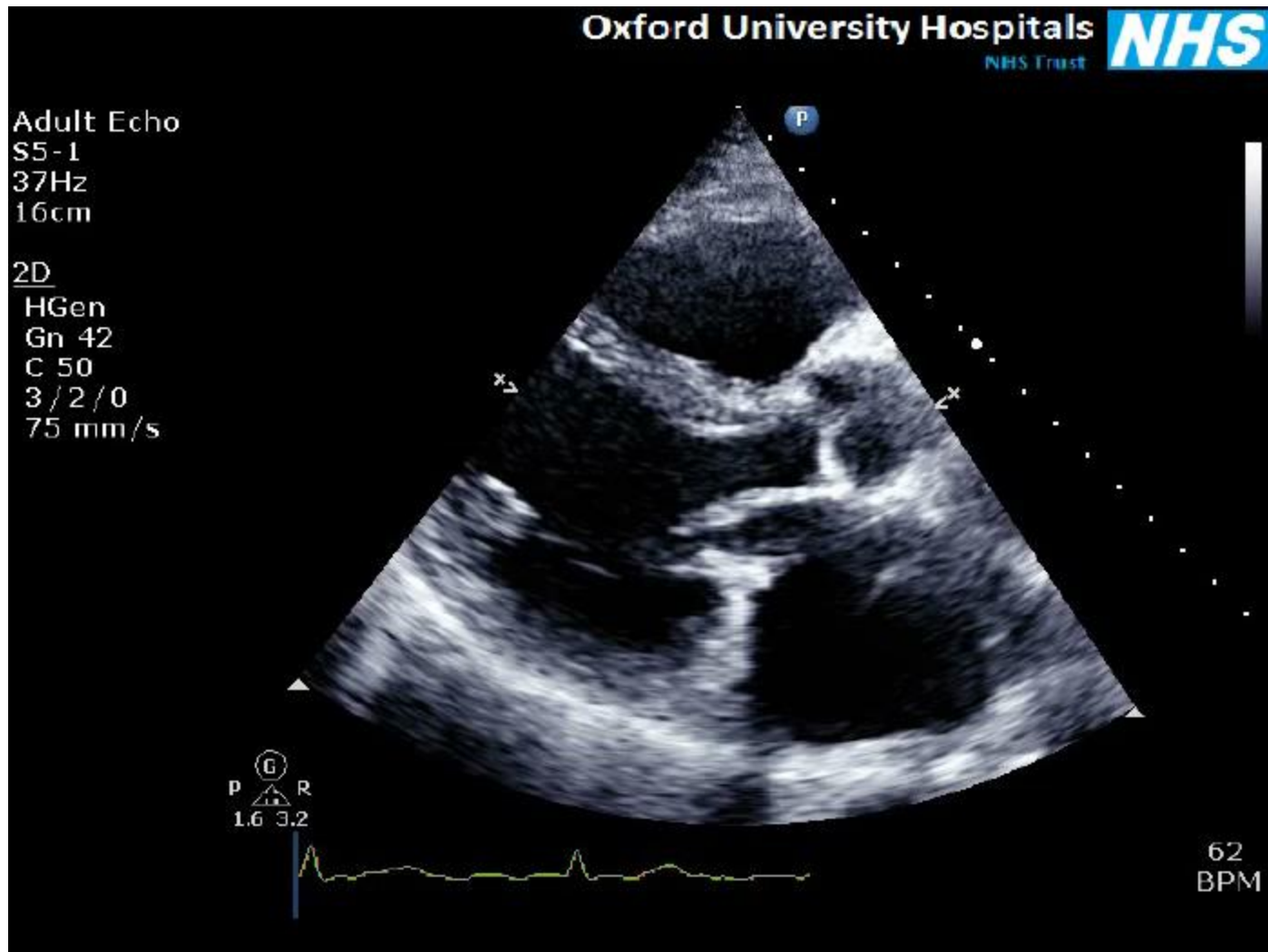
Mitral valve repair



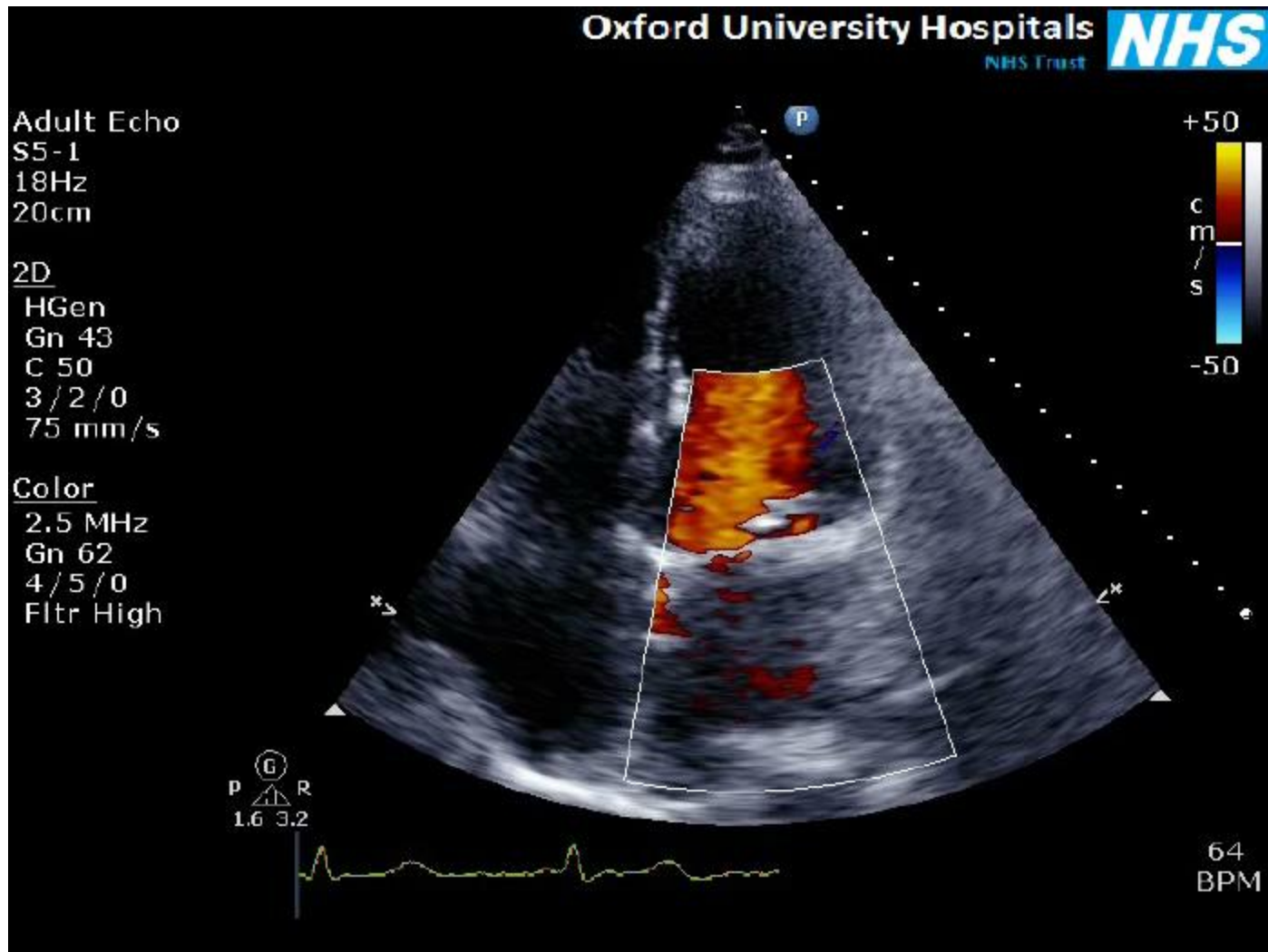
Clinical history

- 72 year old male
- Mitral valve repair 12 years earlier
- Progressive heart failure symptoms
- Now NYHA class III on therapy
- Loud pan systolic murmur
- Referred back to outpatients

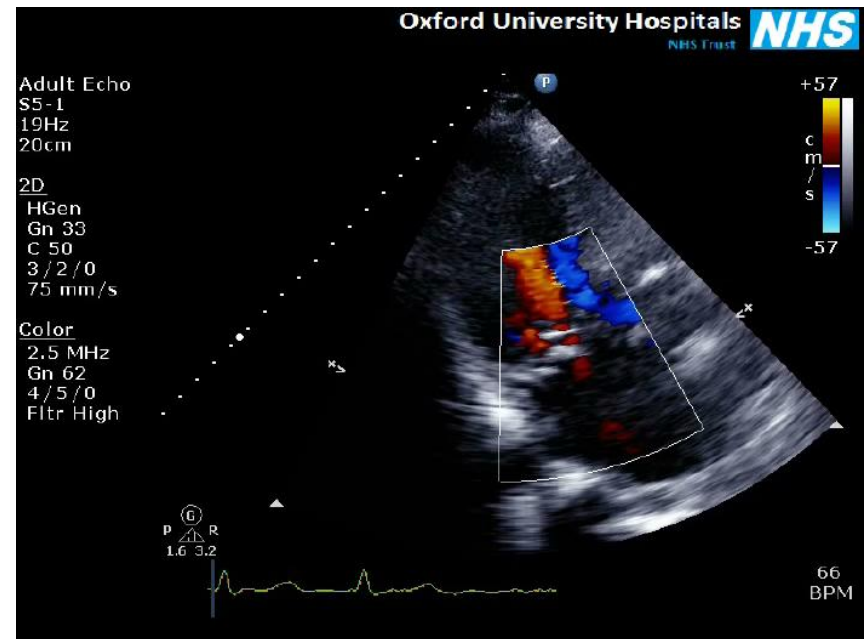
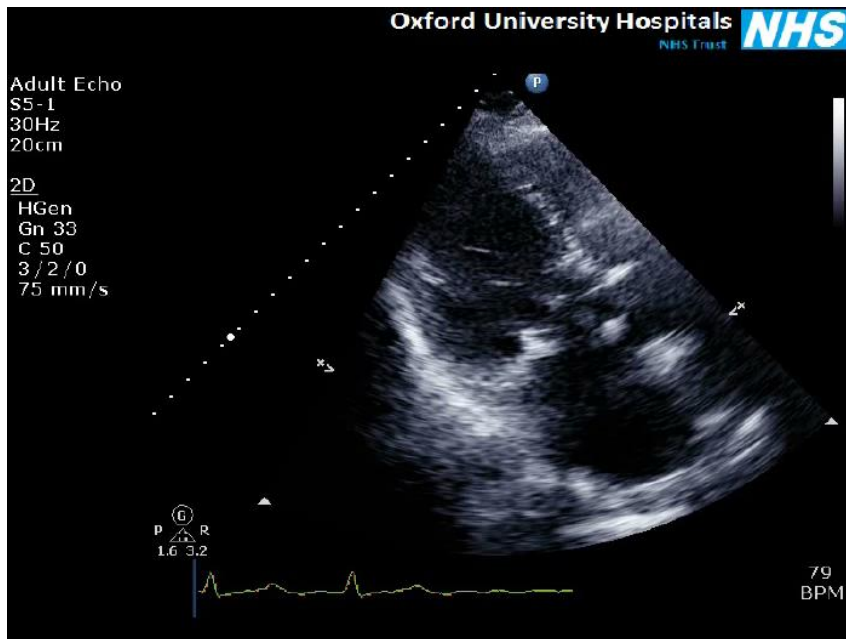
Transthoracic PLAX



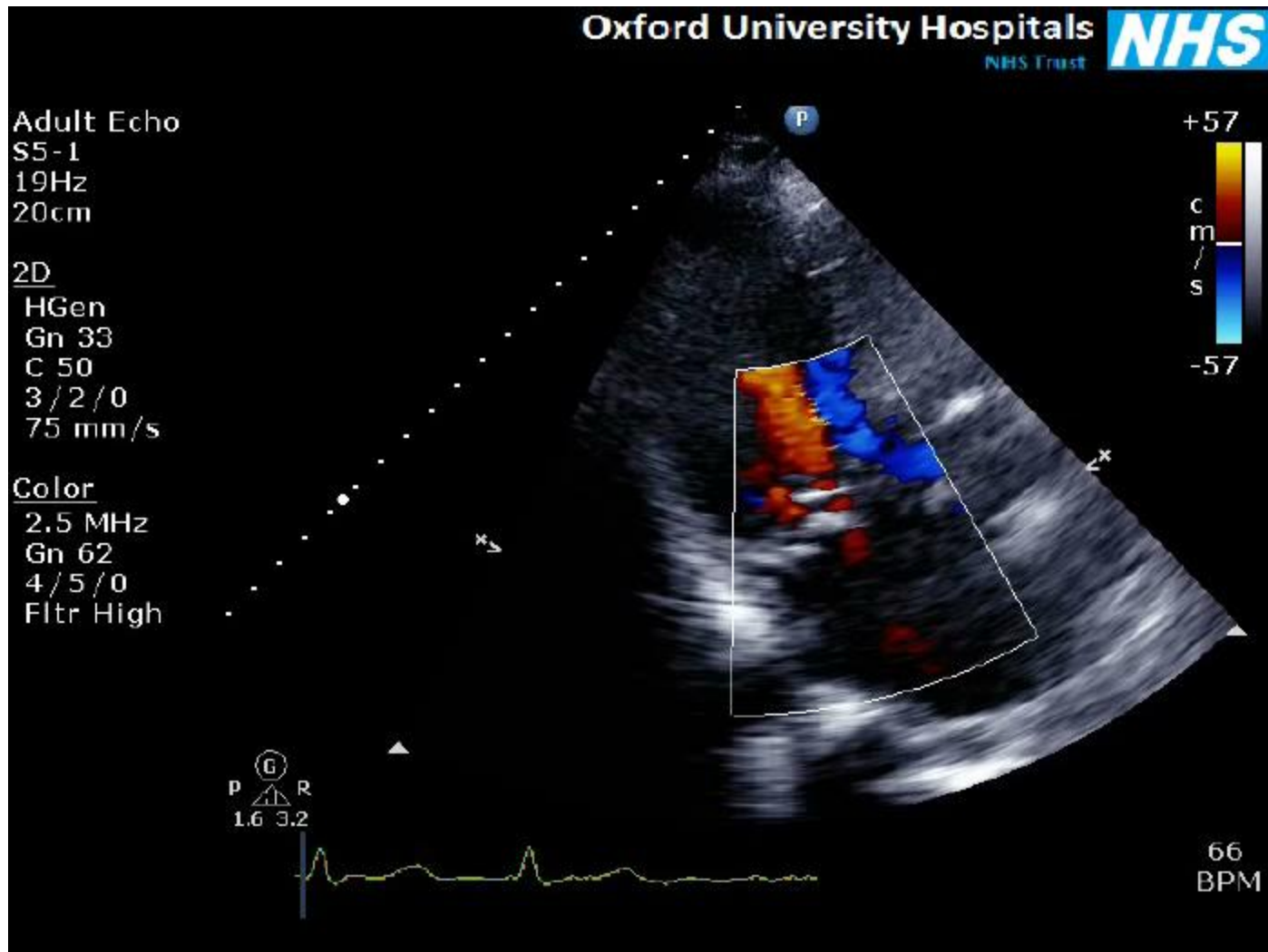
Apical 4 chamber



Apical 3 chamber



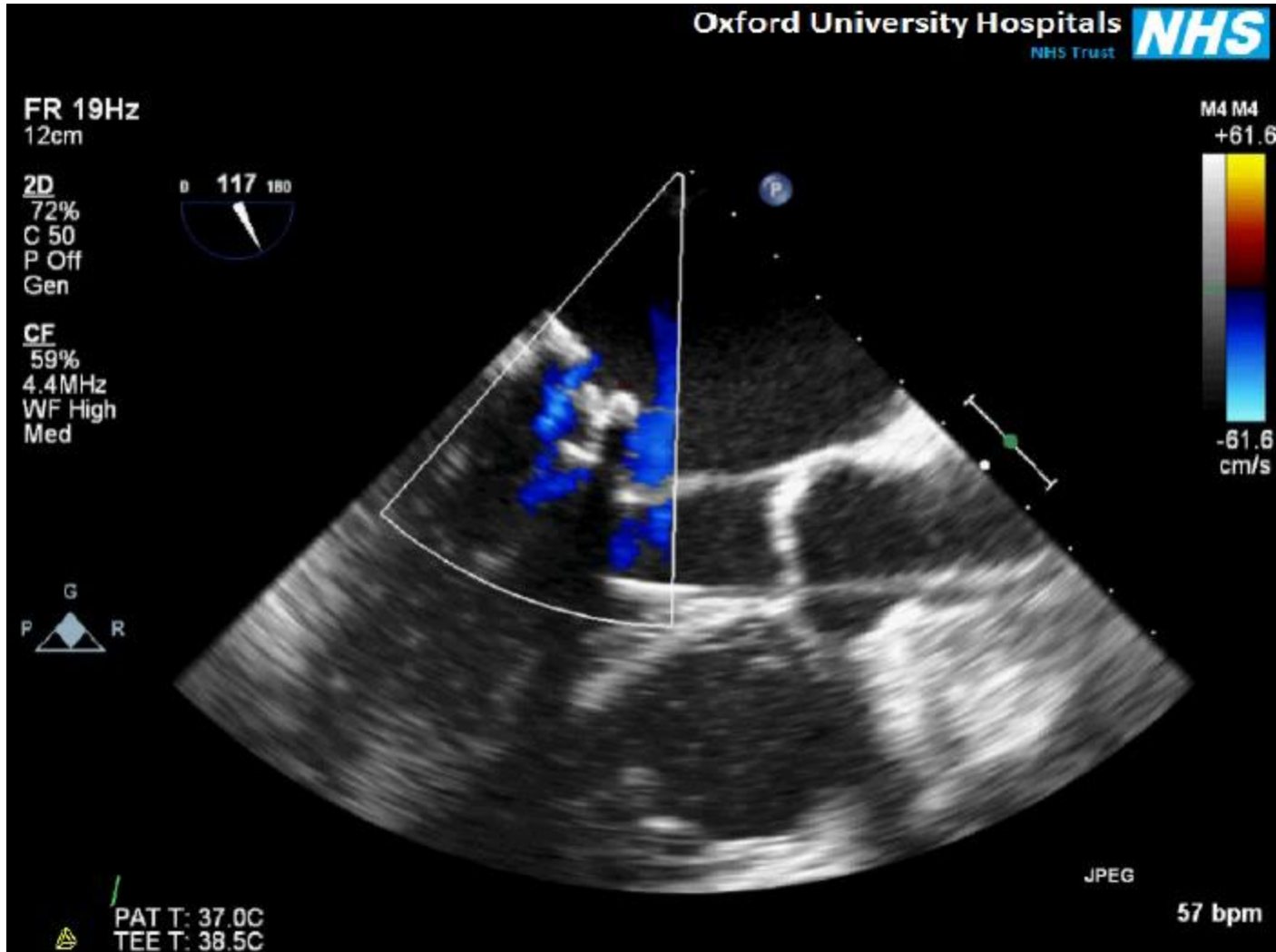
Apical 3 chamber



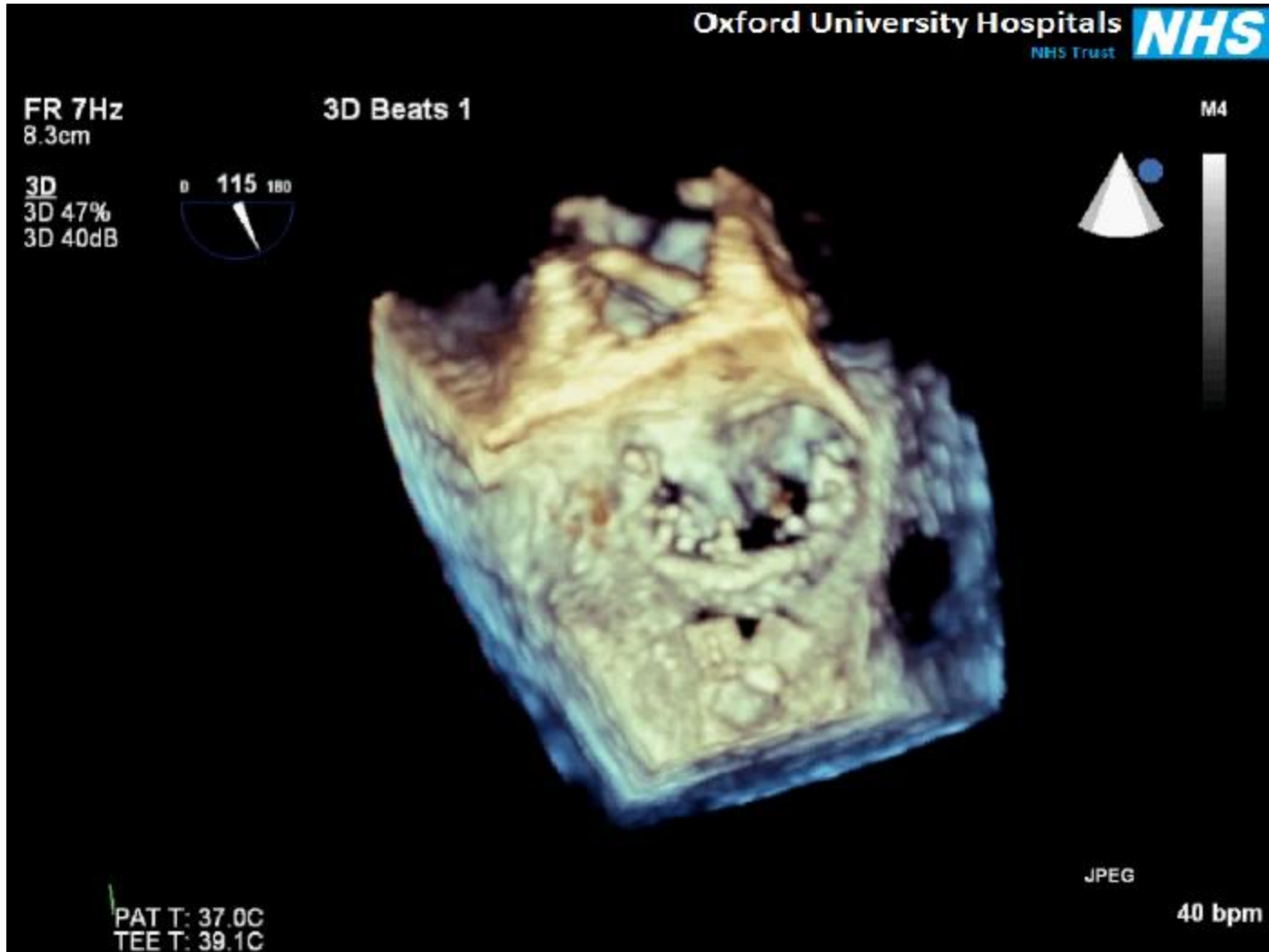
What would you do now?

1. Increase medical therapy and monitor
2. Refer for redo surgery
3. Investigate further
4. Palliate

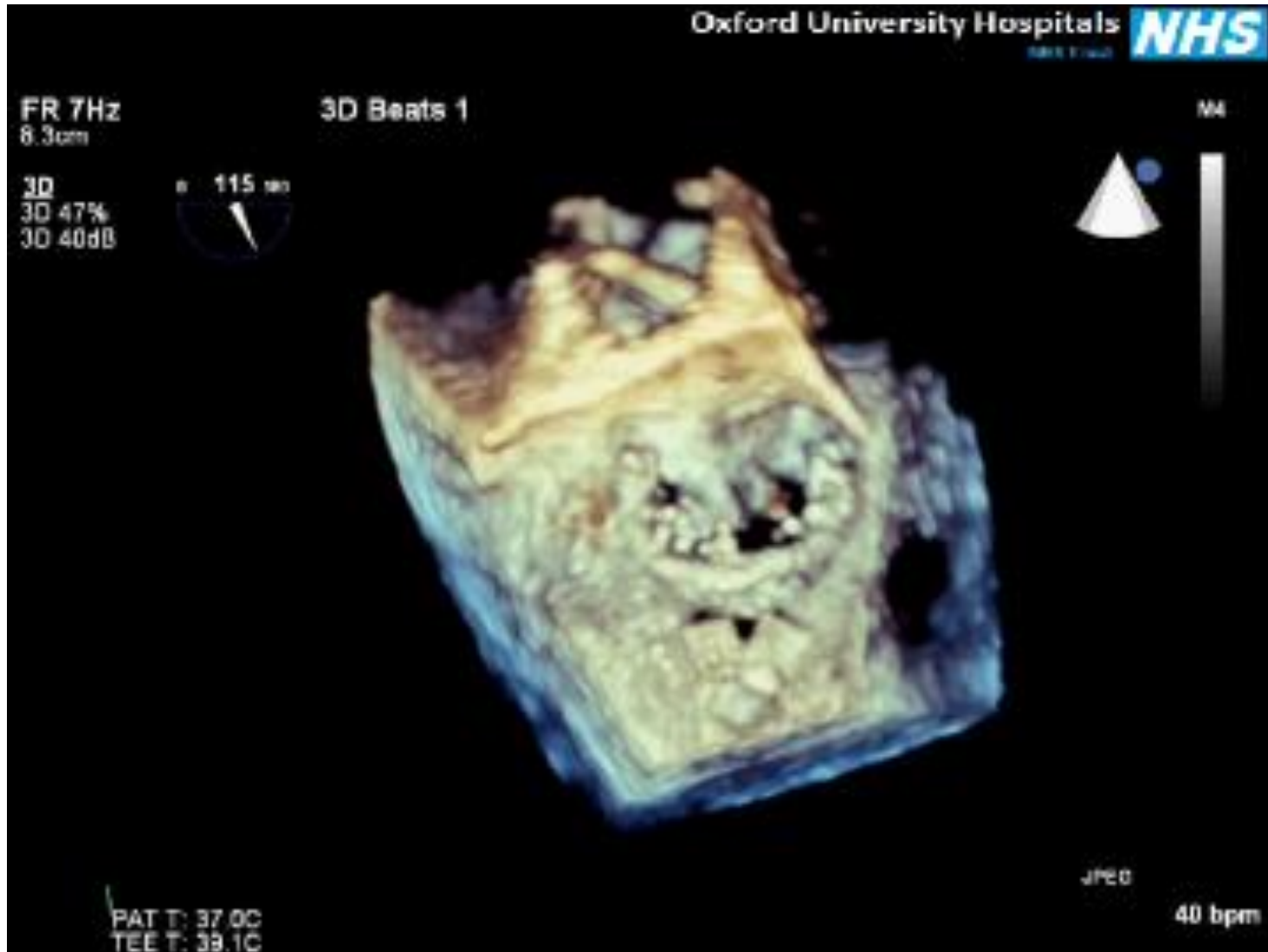
TOE LAX view – severe MR



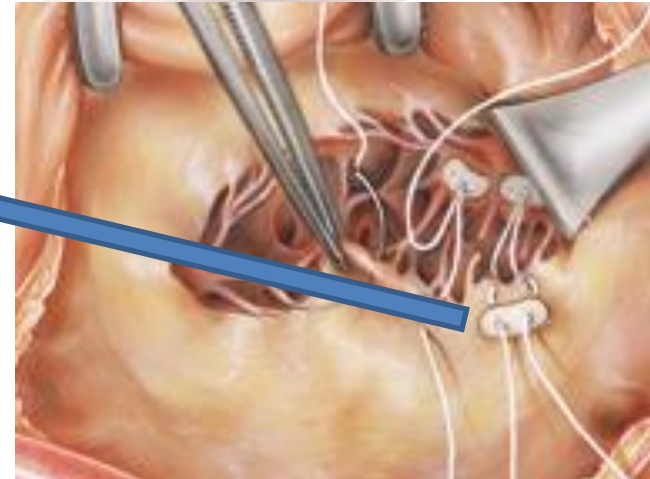
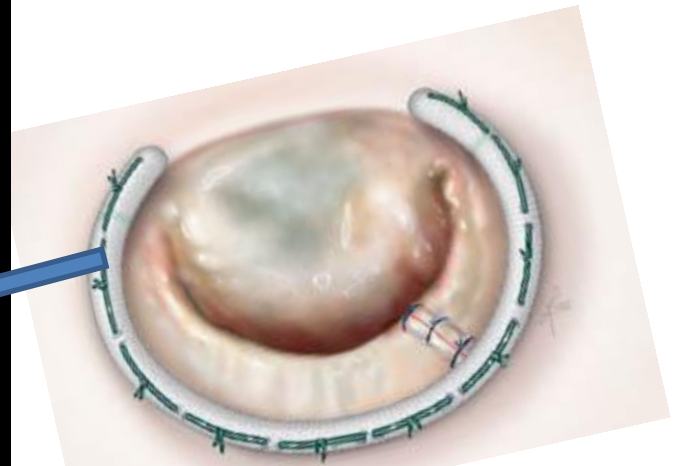
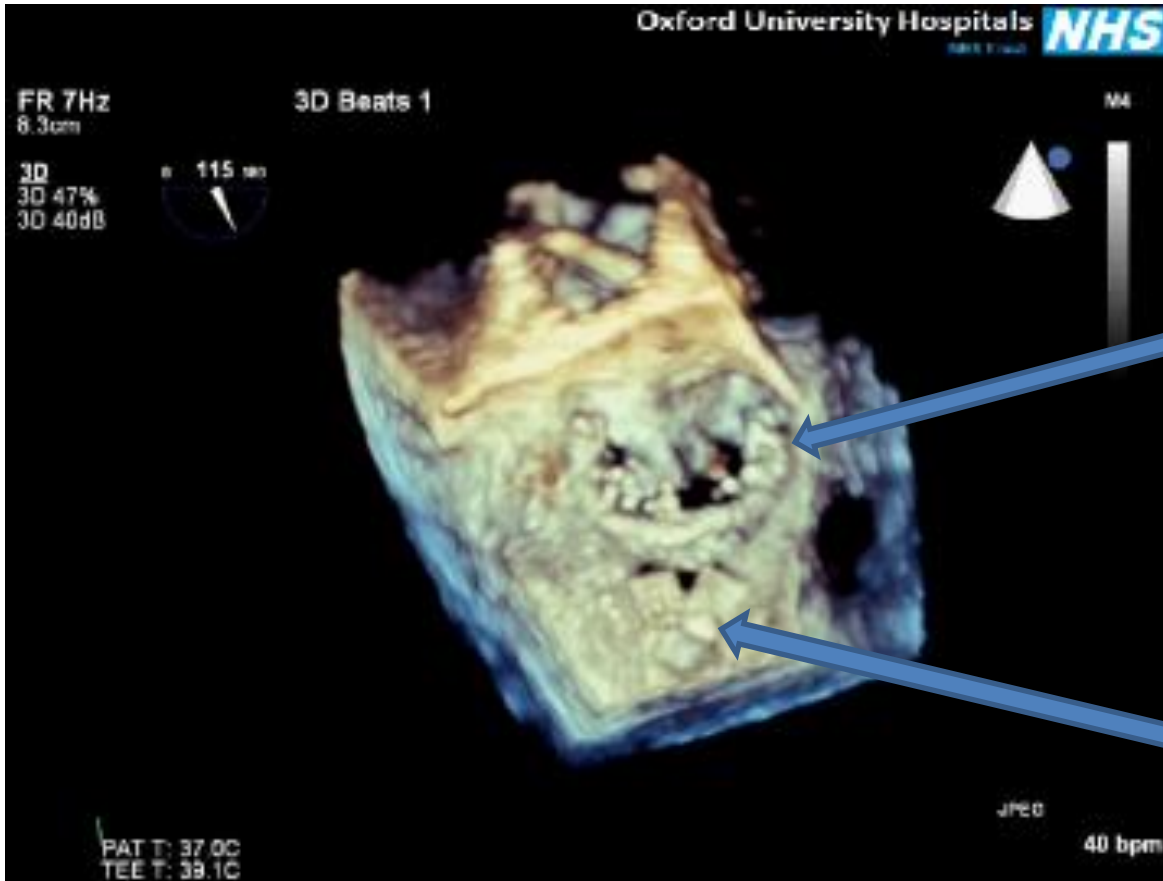
3D TOE of mitral valve



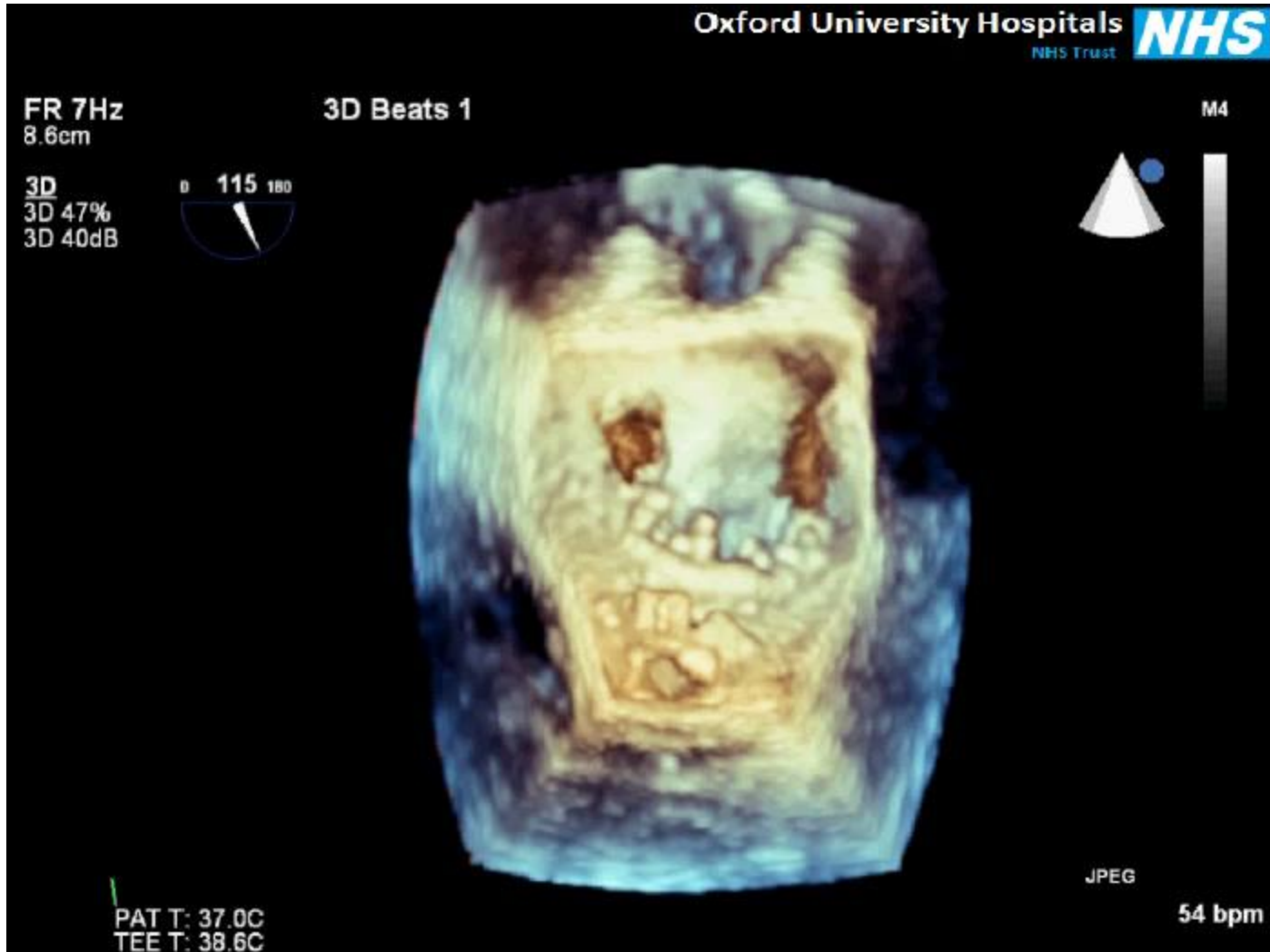
Understand anatomy



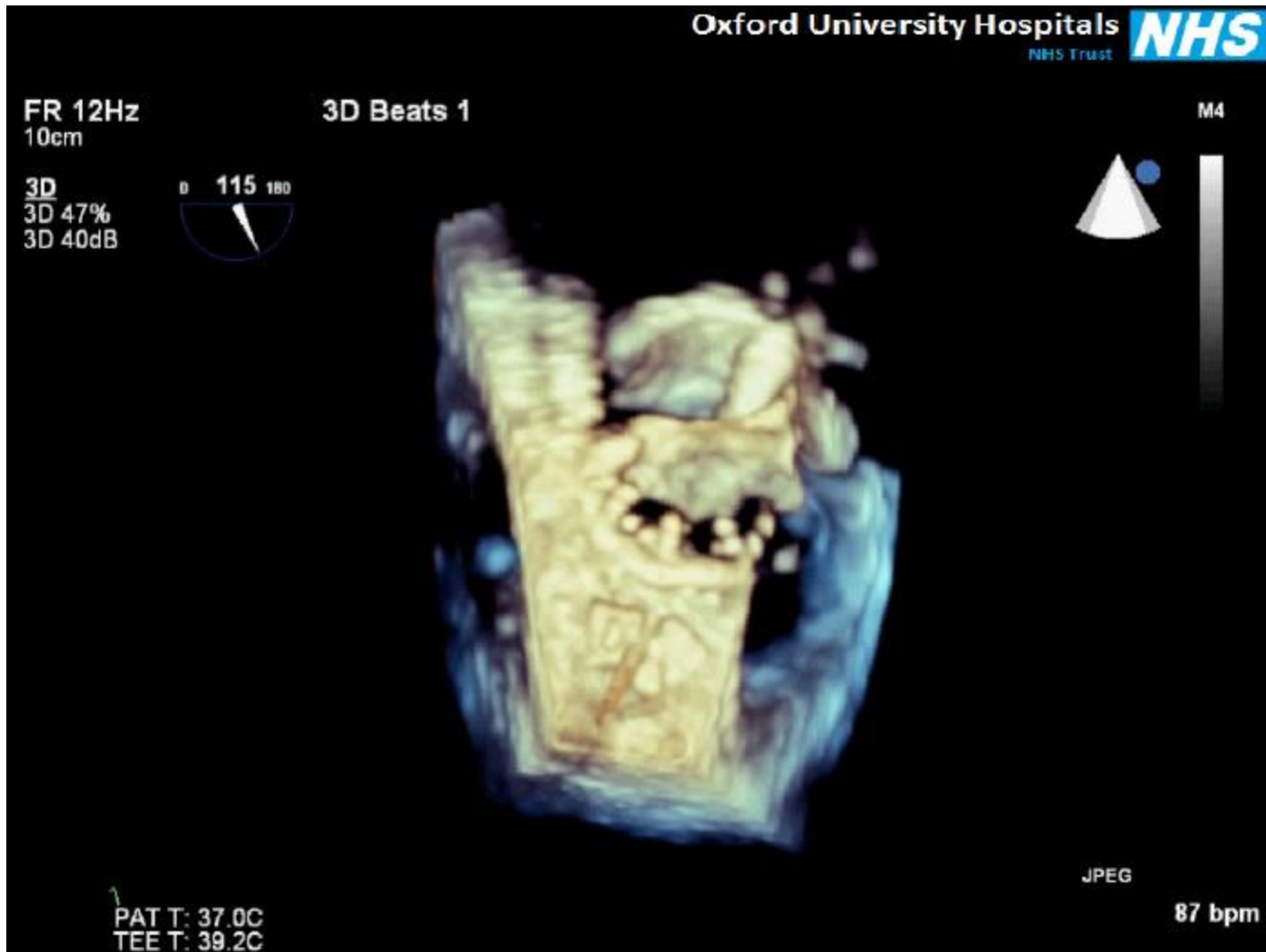
Understand anatomy



Define defect



Guide wire passage



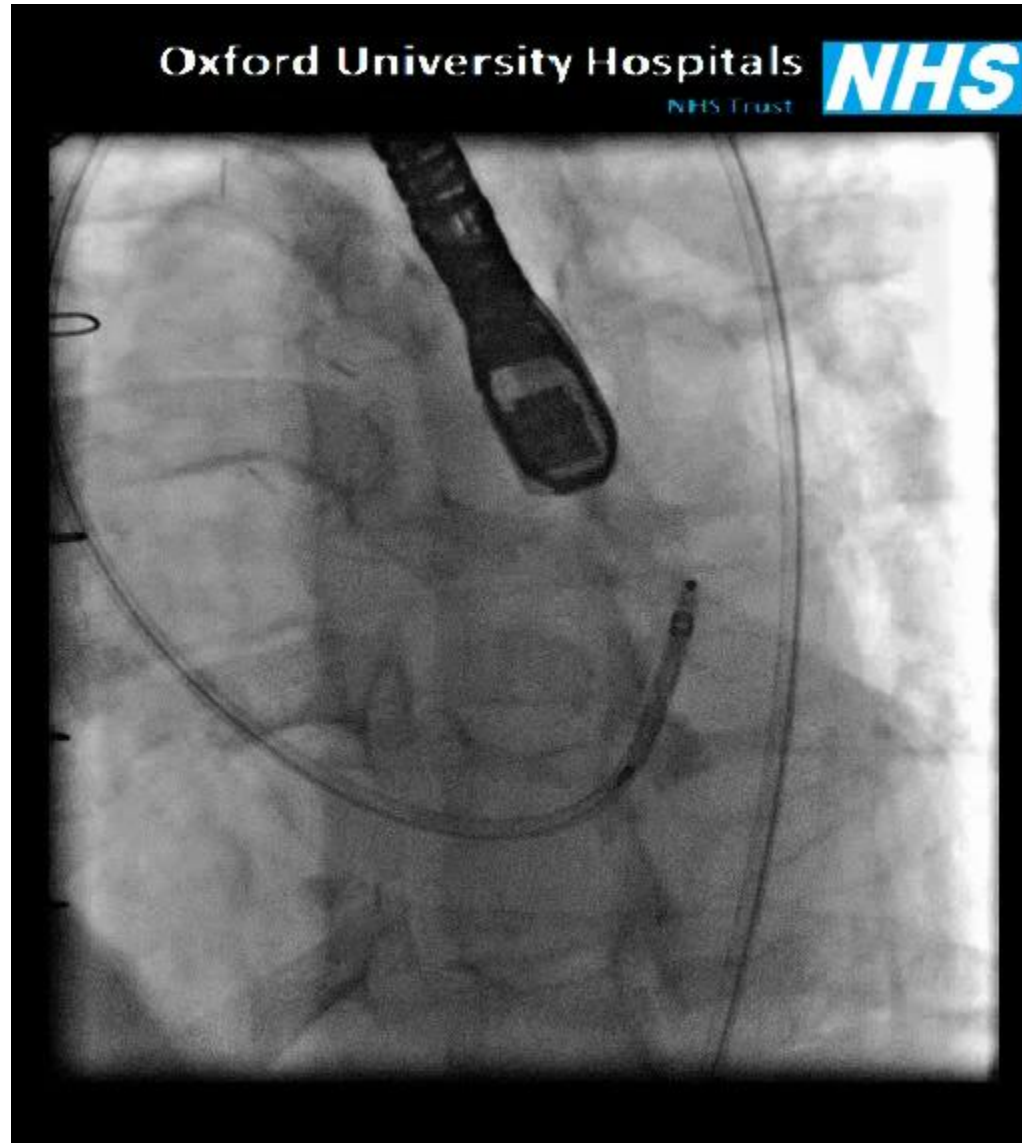
2D TOE



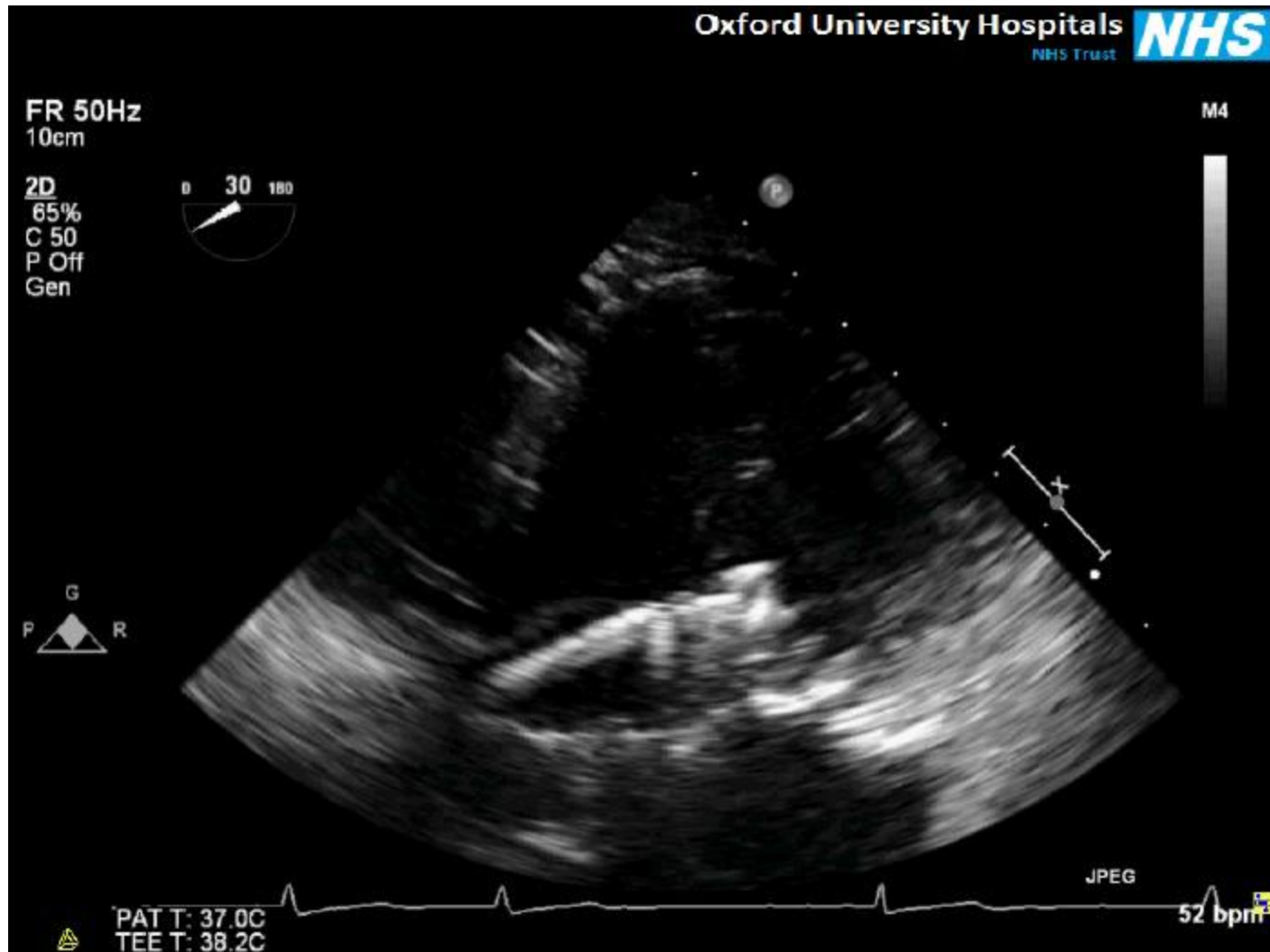
Sheath through defect



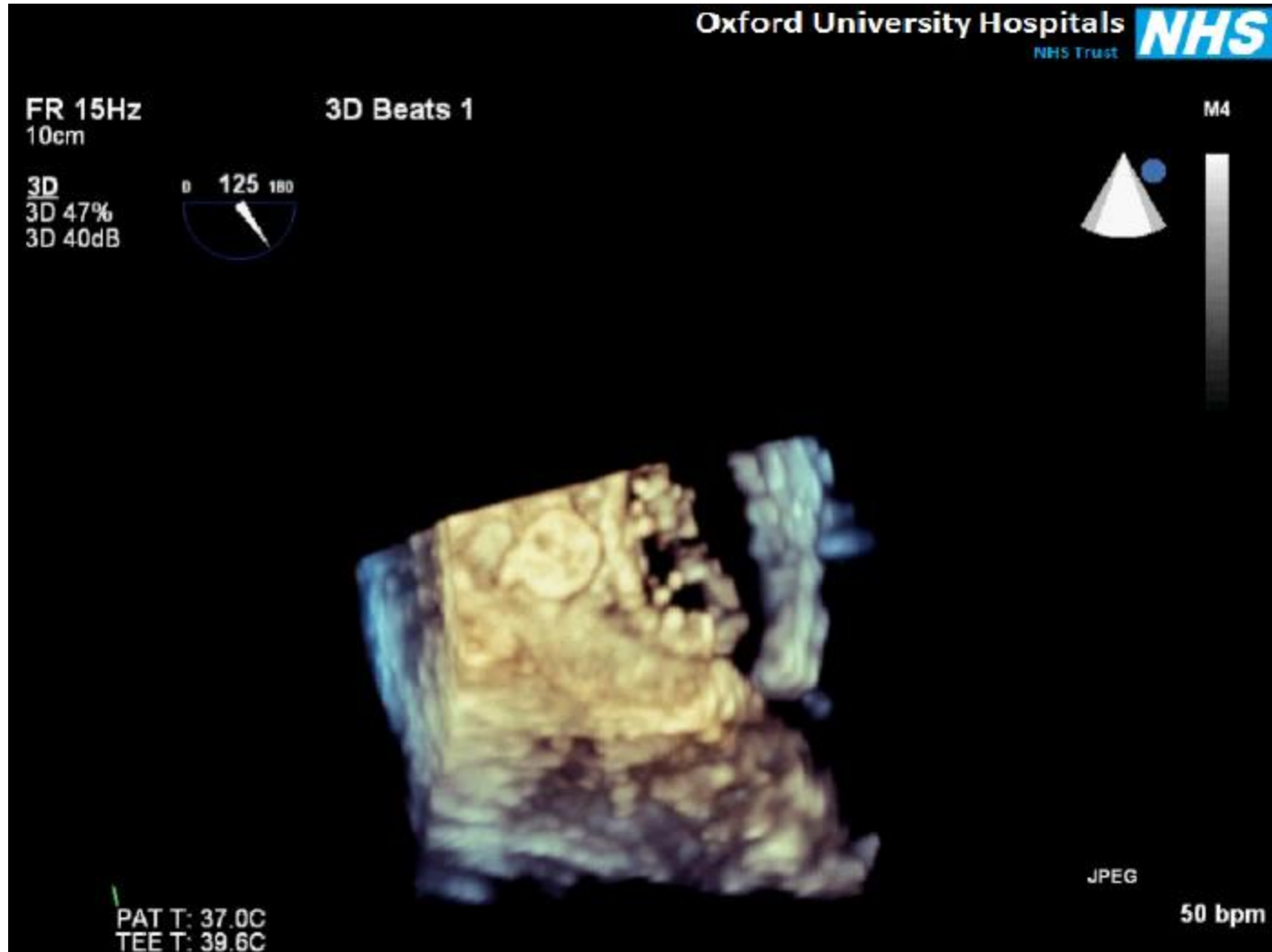
Fluoroscopy view



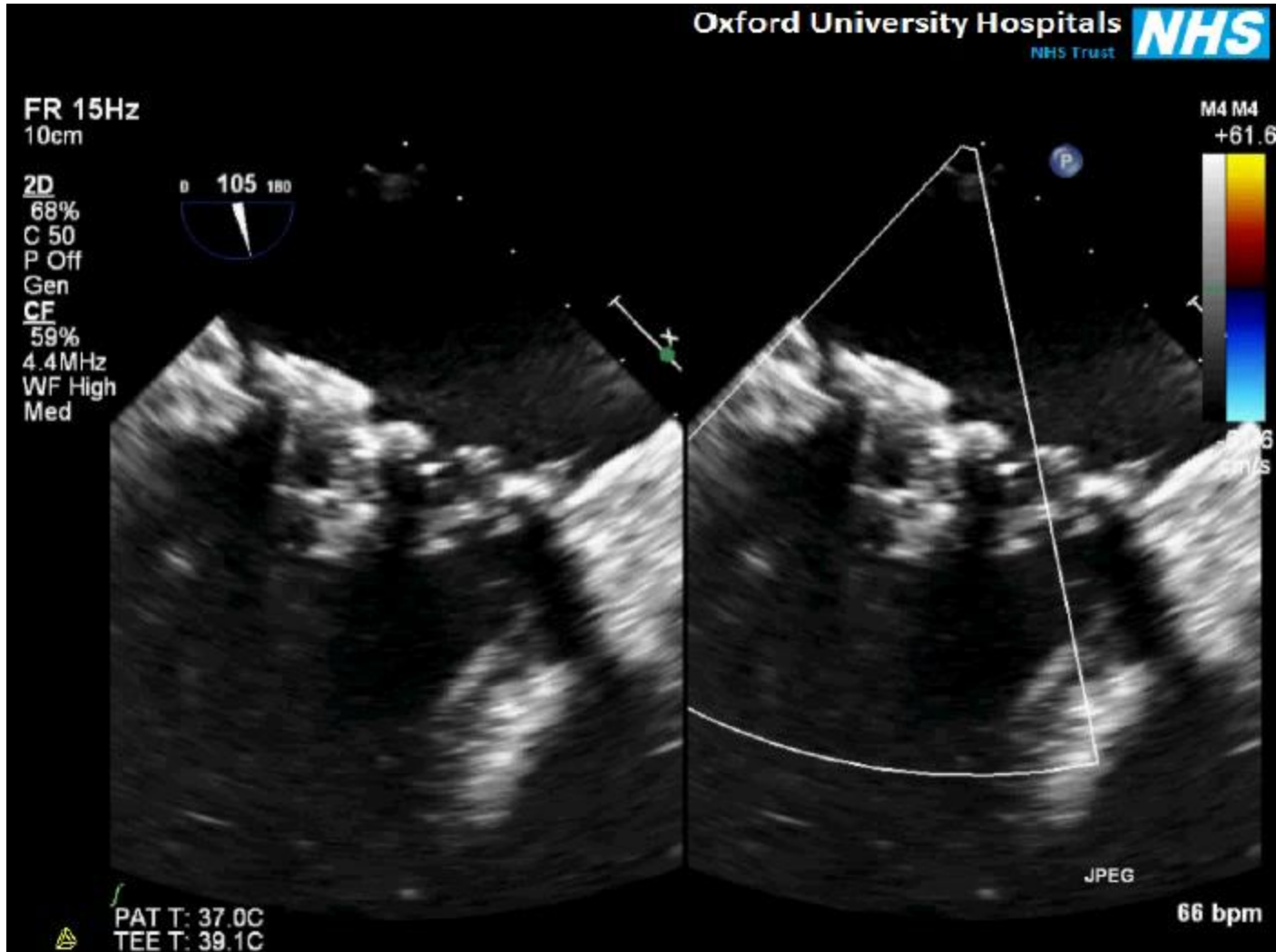
Device delivery – LV aspect



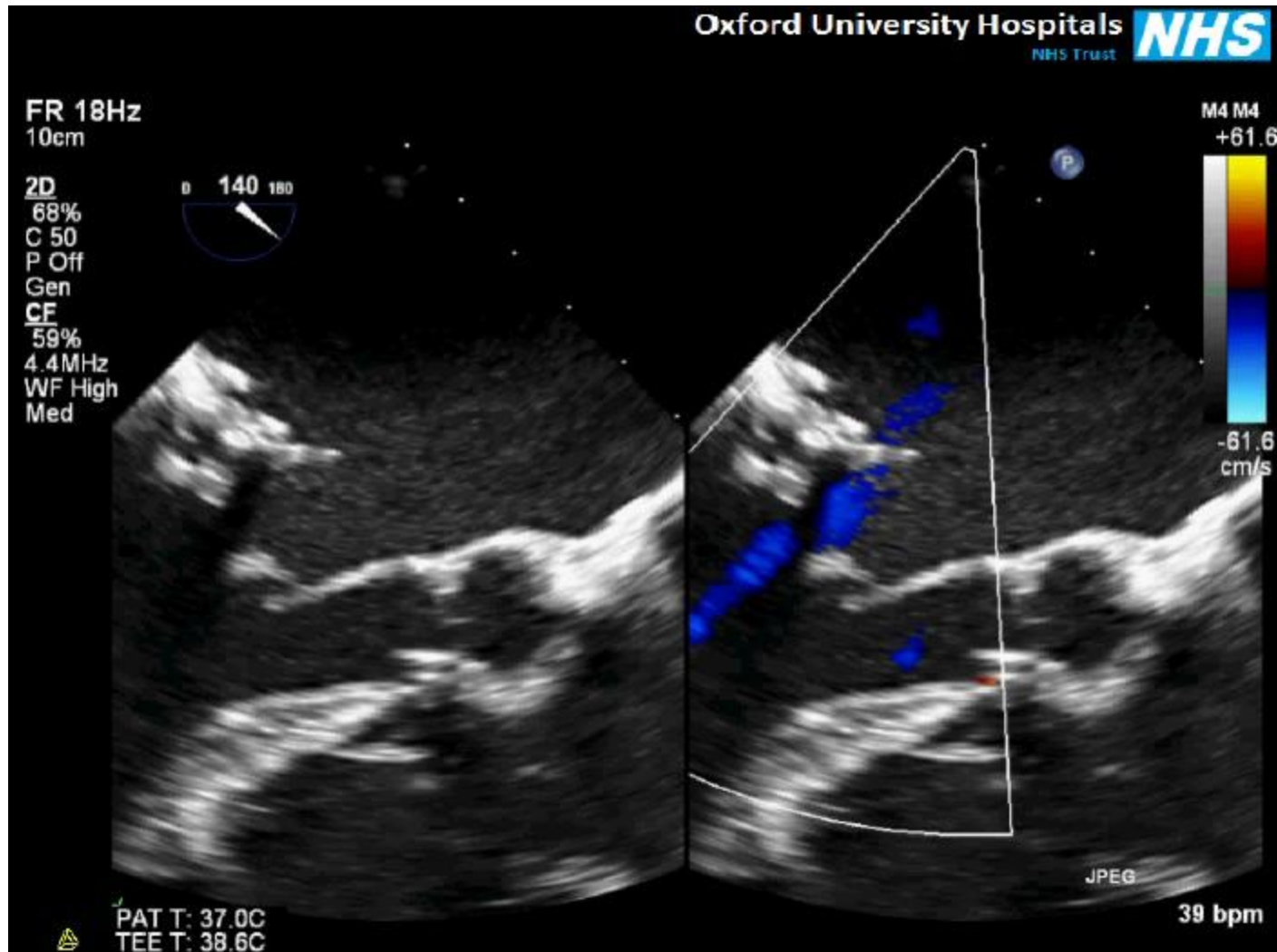
Final device position



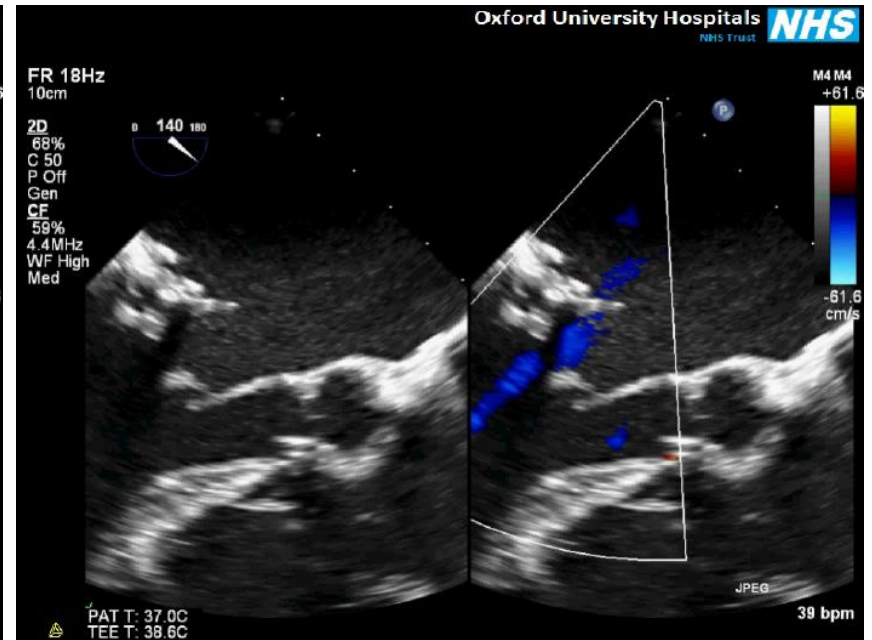
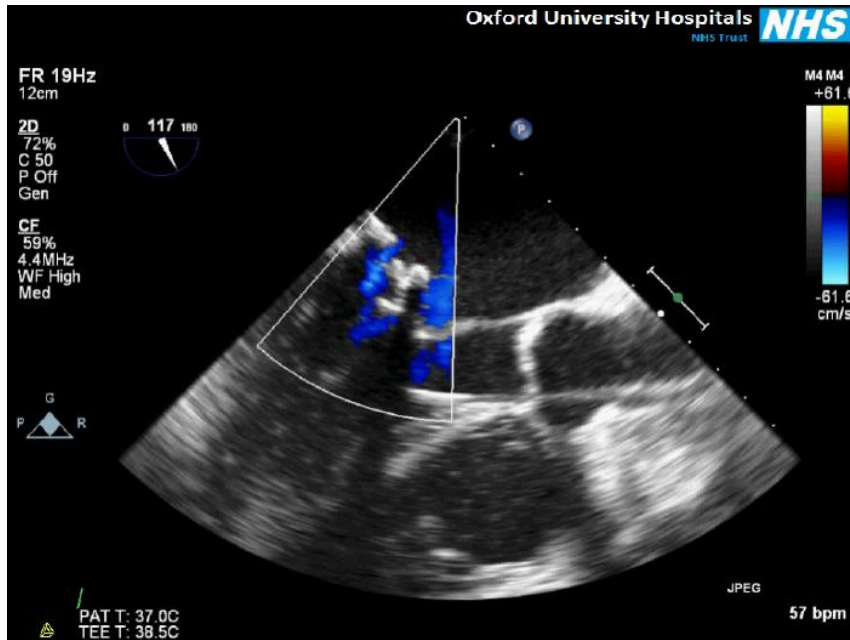
Colour flow with device deployed



Final appearance



Before and after



Outcome

- Now NYHA class I
- Off all diuretics therapy
- Feeling better than after initial surgery